



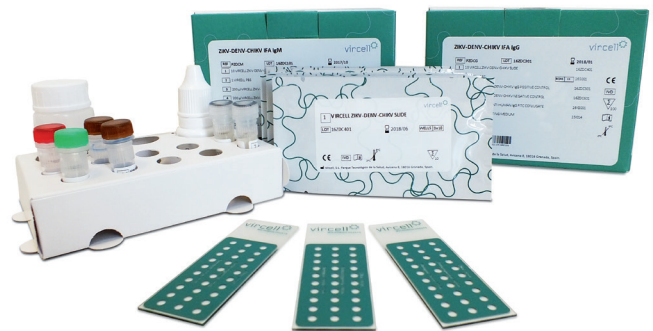
Arbovirus

Zika - Dengue - Chikungunya

Indirect immunofluorescent assays (IFA) for the detection of IgG and IgM antibodies against the arbovirus Zika, Dengue (1-4) and Chikungunya

Product features:

- **Differential diagnosis of arbovirus infections** with similar symptoms
- **Easy-to-read results**, using fully coated separate wells with a pool of infected and uninfected cells to easily discard samples reactive to antinuclear antibodies
- Evans blue dye in IgG and IgM conjugates to **reduce background**, improving the contrast to read results
- **Complete ready-to-use kits** including IgG sorbent for IgM determinations



Ref. PZDCM 100 Tests
Ref. PZDCG 100 Tests

Zika - Dengue - Chikungunya

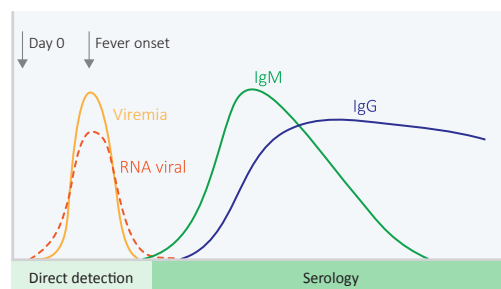
Zika, Dengue and Chikungunya arbovirus infections share some clinical symptoms, circulate in the same geographical areas and are transmitted by the same vector, infected *Aedes* species mosquito.

At a clinical suspicion, laboratory confirmation is essential to:

- Differentiate diseases with very similar clinical symptoms
- Early detect new cases
- Epidemiological surveillance

The samples should be obtained as soon as possible after the onset of fever to maximize the diagnostic performance. However, these viremias are very short (5-8 days) and different technical approaches, depending on the stage of the disease, are required.

A week after the onset of symptoms, the PCR may give false-negative results and serological assays are more convenient.

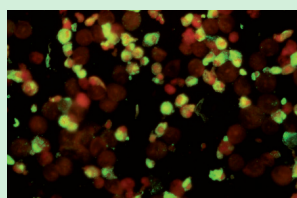


Interpretation of serologic testing

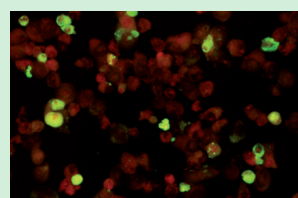
Primary infections (first flavivirus infection) have shown minimal cross-reactions with other genetically related viruses and could be resolved by titration. However, sera from individuals with a previous history of infection with other flavivirus (specially dengue virus, West Nile and yellow fever -including its vaccine-) may have significant cross-reactions.

Easy reading and interpretation

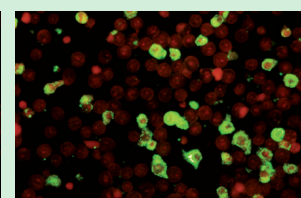
- Ø3mm wells separated and fully coated.
- Pool of infected and uninfected cells to easily detect samples with antinuclear antibodies.
- High contrast between infected and uninfected cells thanks to the use of Evans Blue dye in the conjugate.



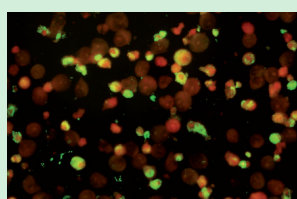
Zika IgG Positive



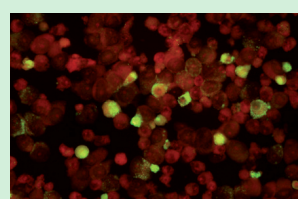
Dengue (1-4) IgG Positive



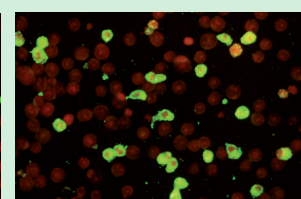
Chikungunya IgG Positive



Zika IgM Positive



Dengue (1-4) IgM Positive



Chikungunya IgM Positive

Ordering information and related products

| Cat. No. | Description | Pack size |
|----------|------------------------------|-----------|
| PZDCG | ZIKV-DENV-CHIKV IFA IgG | 100 tests |
| PZDCM | ZIKV-DENV-CHIKV IFA IgM | 100 tests |
| G1018 | DENGUE ELISA IgG | 96 tests |
| M1018 | DENGUE ELISA IgM CAPTURE | 96 tests |
| G1023 | ZIKA ELISA IgG* | 96 tests |
| M1023 | ZIKA ELISA IgM* | 96 tests |
| VCM023 | DENGUE VIRCLIA® IgG MONOTEST | 24 tests |
| VCM024 | DENGUE VIRCLIA® IgM MONOTEST | 24 tests |
| VCM033 | ZIKA VIRCLIA® IgG MONOTEST* | 24 tests |
| VCM035 | ZIKA VIRCLIA® IgM MONOTEST* | 24 tests |

* Coming soon

Vircell, S.L.

Parque Tecnológico de la Salud, Avicena 8, 18016 Granada, Spain
info@vircell.com | www.vircell.com